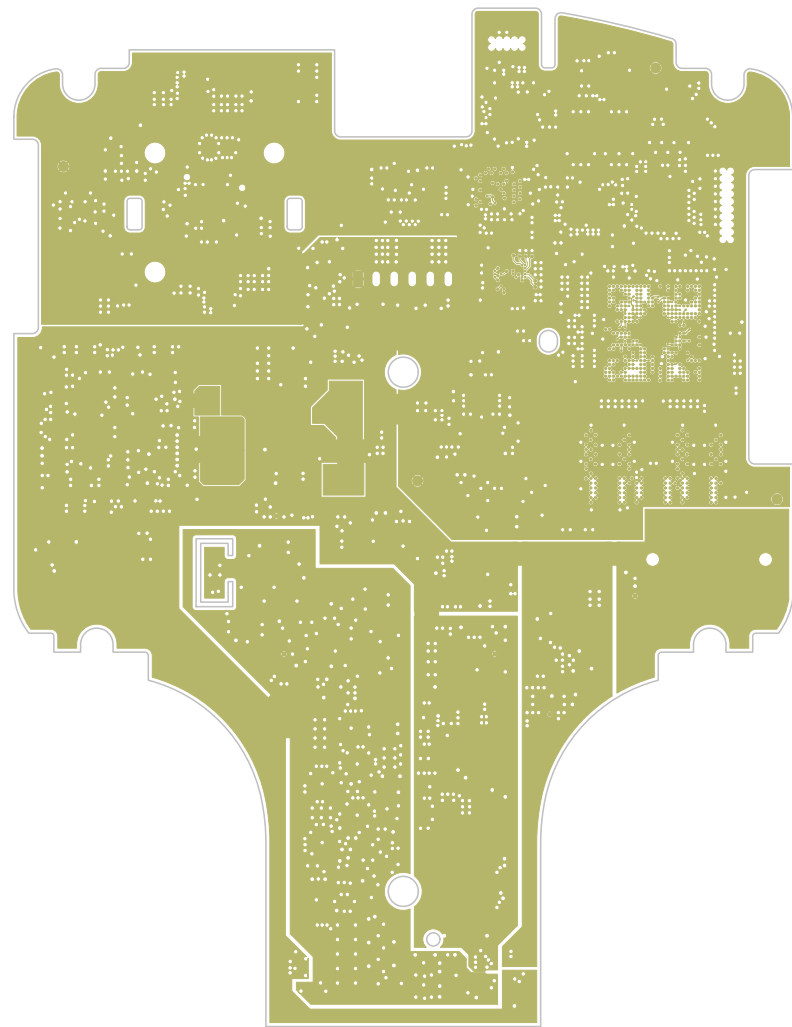


S/N

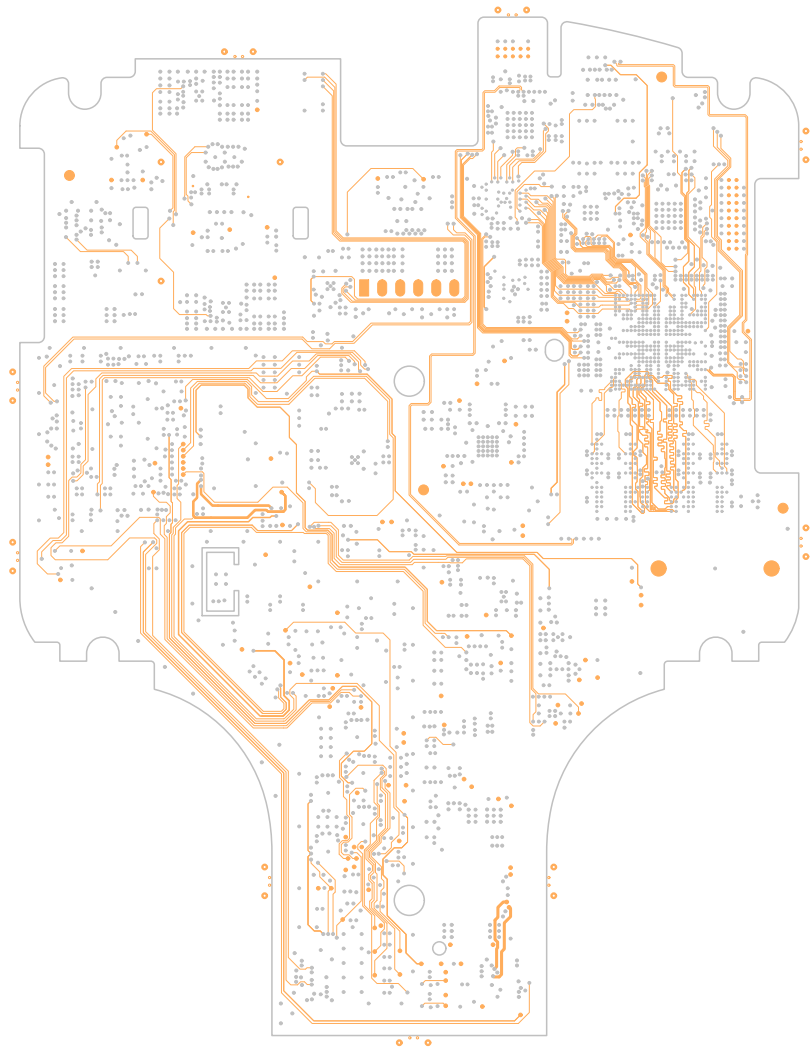
© 2012 Abbott Point of Care, Inc.
PCB # 027400-P1



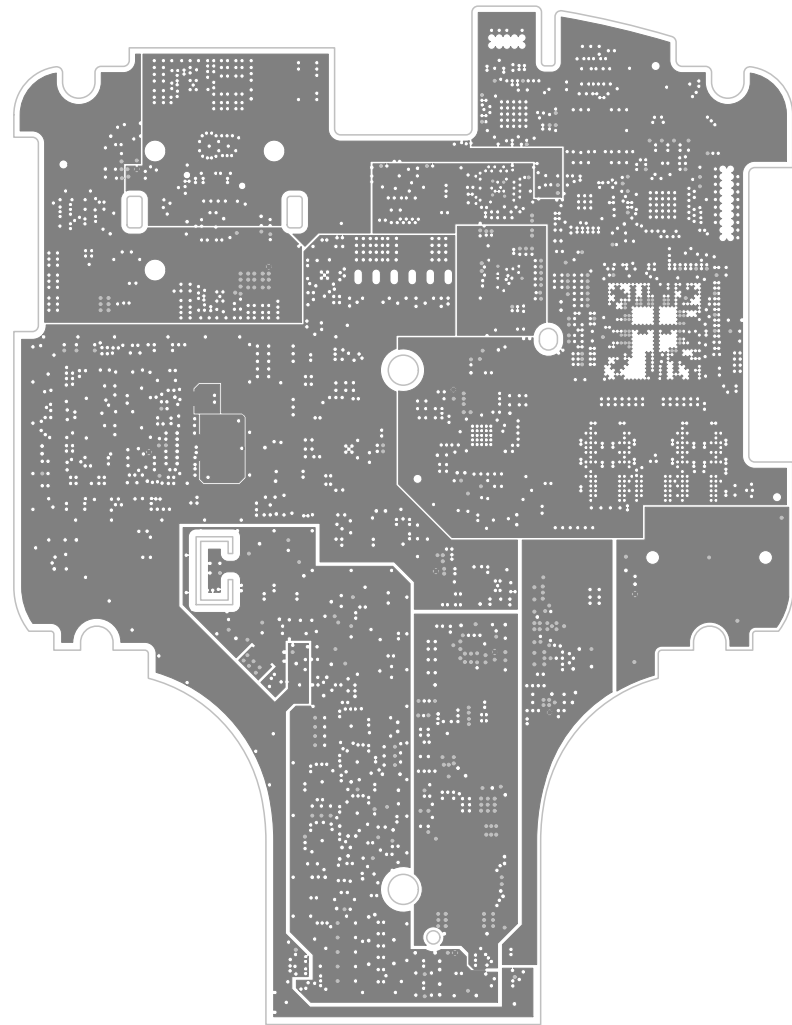
DESIGN BY TRI-TEC DESIGN, INC. (973) 256-5030	TITLE: DRAGONFLY MAIN PCB	
DESIGNER: SJA/TTD PHONE: (973) 256-5030	PART NO: 027400	REV: P1
	FILE: 027400-P1.PCB	DATE: MAY-30-2012
LAYER 1 (TOP SIDE)		



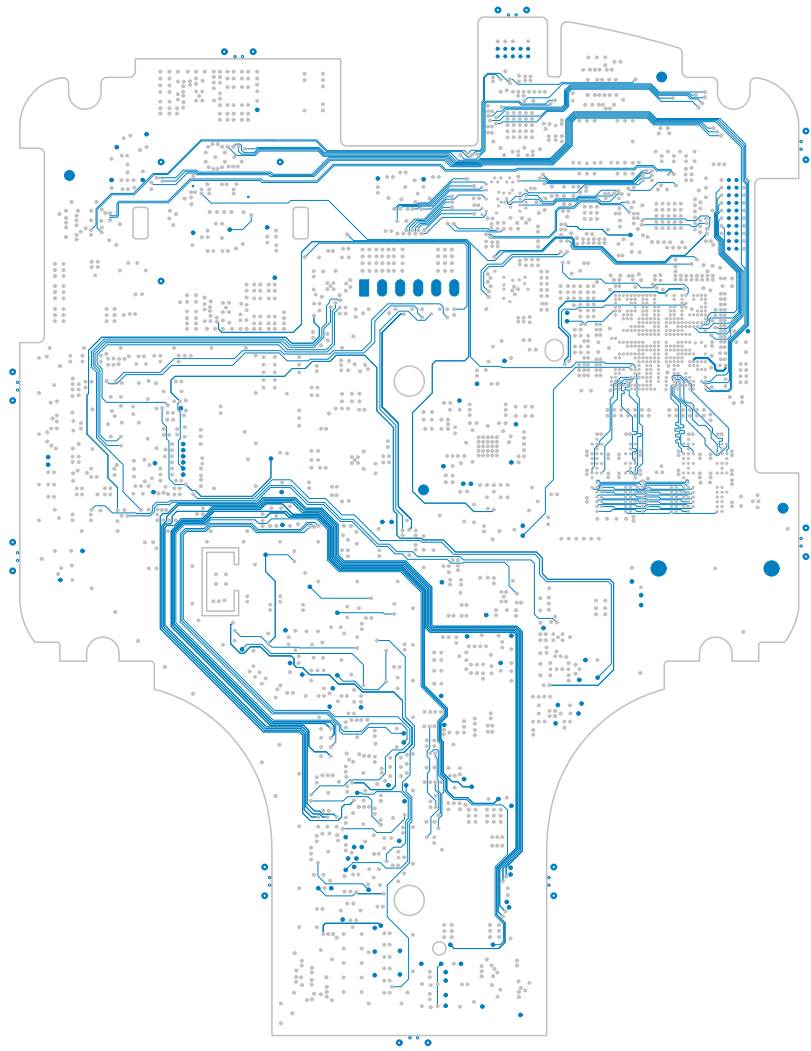
DESIGN BY TRI-TEC DESIGN, INC. (973) 256-5030	TITLE: DRAGONFLY MAIN PCB
DESIGNER: SJA/TTD PHONE: (973) 256-5030	PART NO: 027400 REV: P1
	FILE: 027400-P1.PCB DATE: MAY-30-2012
GROUND PLANE (LAYER 2)	



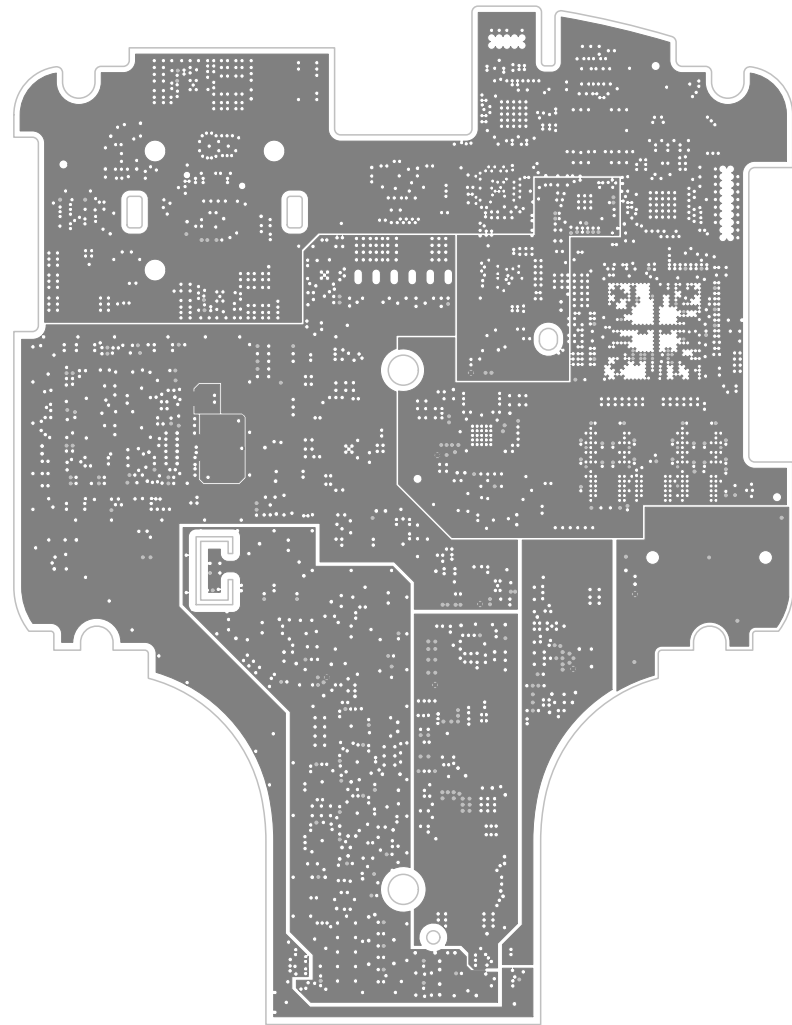
DESIGN BY TRI-TEC DESIGN, INC. (973) 256-5030	TITLE: DRAGONFLY MAIN PCB
DESIGNER: SJA/TTD PHONE: (973) 256-5030	PART NO: 027400 REV: P1
FILE: 027400-P1.PCB	DATE: MAY-30-2012
SIGNAL (LAYER 3)	



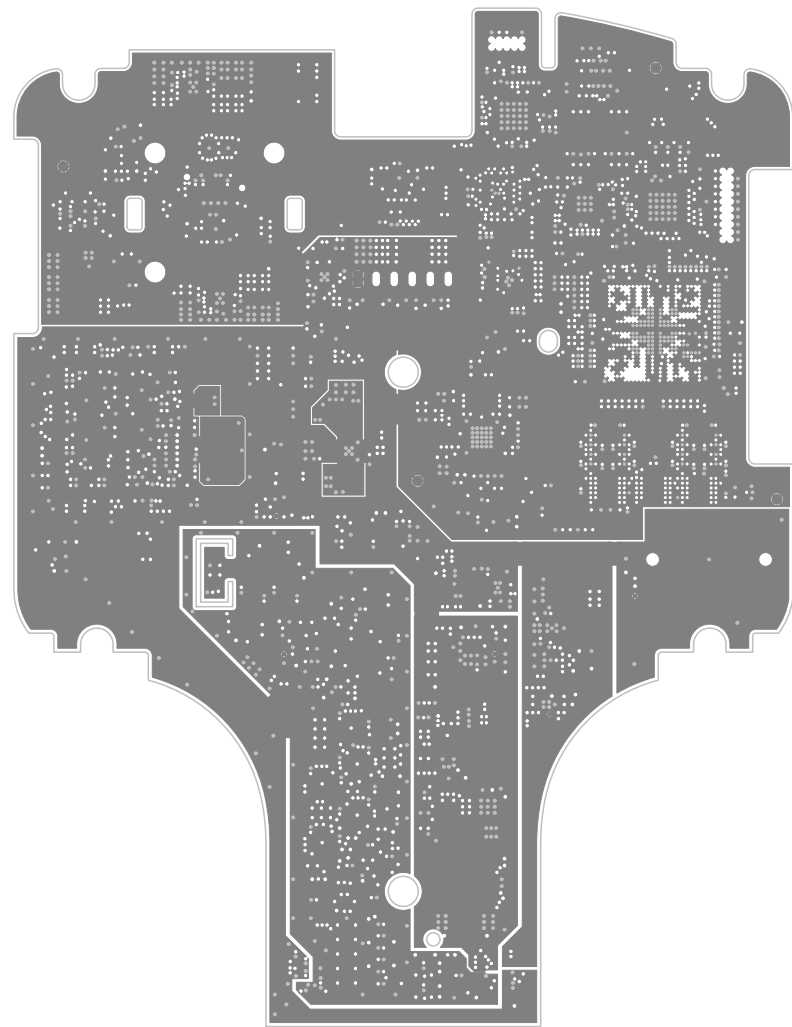
DESIGN BY TRI-TEC DESIGN, INC. (973) 256-5030	TITLE: DRAGONFLY MAIN PCB
DESIGNER: SJA/TTD PHONE: (973) 256-5030	PART NO: 027400 REV: P1
FILE: 027400-P1.PCB	DATE: MAY-30-2012
POWER PLANE (LAYER 4)	



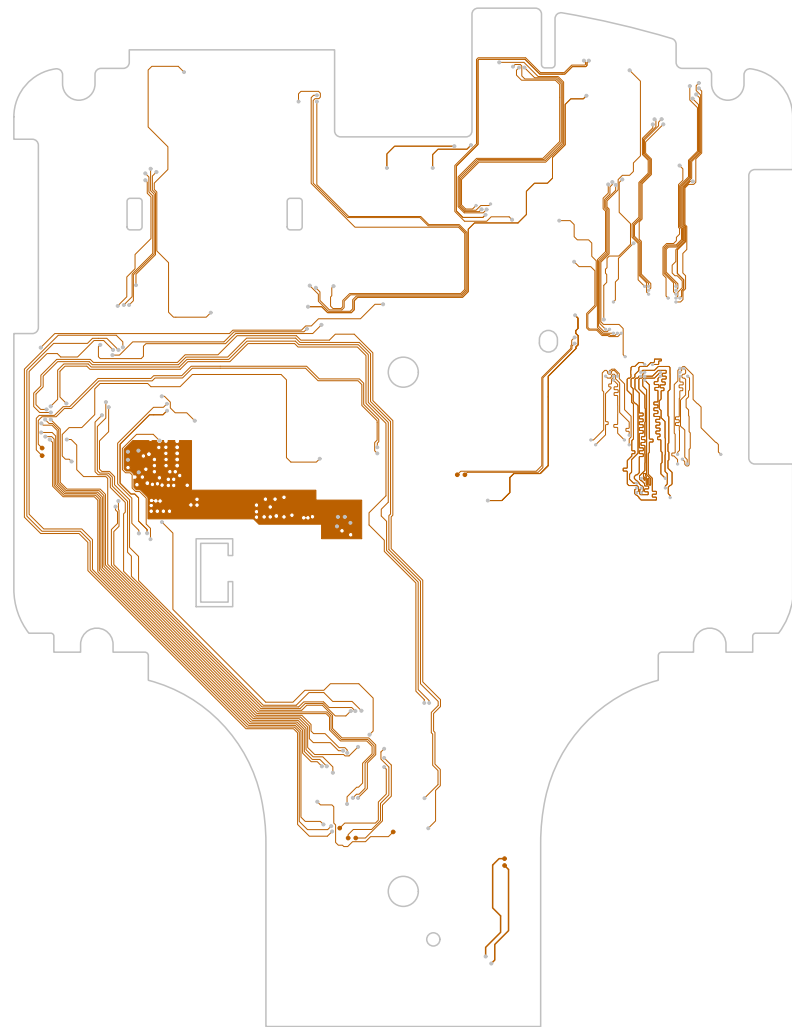
DESIGN BY TRI-TEC DESIGN, INC. (973) 256-5030	TITLE: DRAGONFLY MAIN PCB
DESIGNER: SJA/TTD PHONE: (973) 256-5030	PART NO: 027400 REV: P1
FILE: 027400-P1.PCB	DATE: MAY-30-2012
SIGNAL (LAYER 5)	



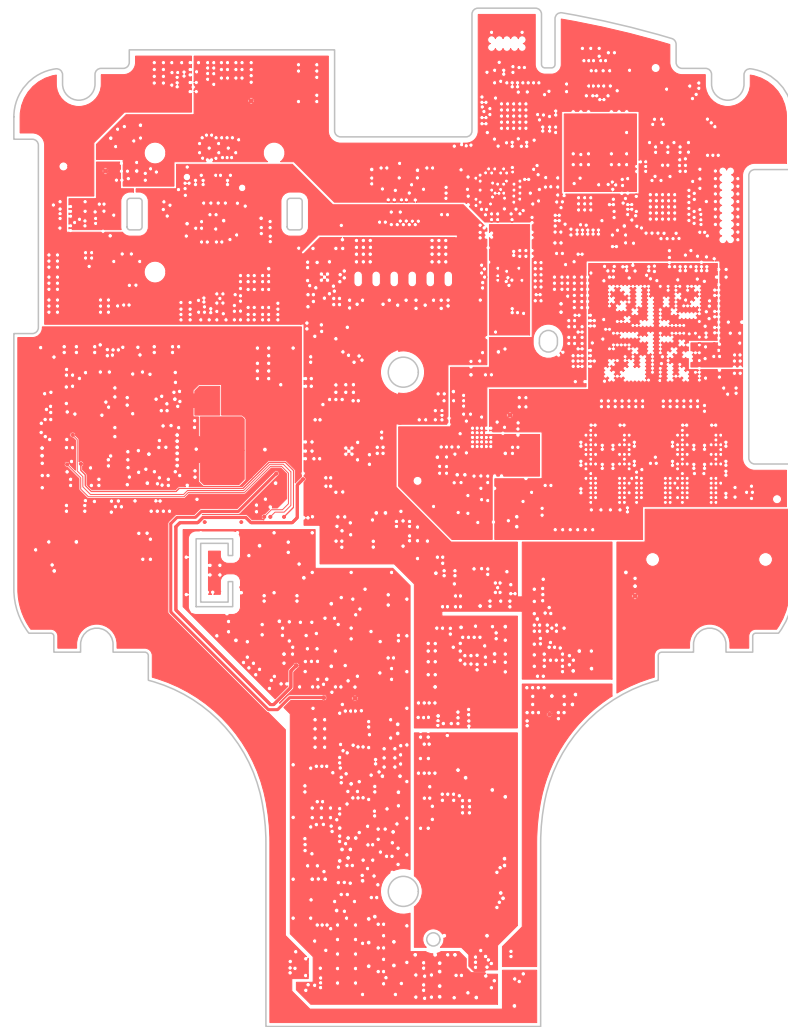
DESIGN BY TRI-TEC DESIGN, INC. (973) 256-5030	TITLE: DRAGONFLY MAIN PCB
DESIGNER: SJA/TTD PHONE: (973) 256-5030	PART NO: 027400 REV: P1
FILE: 027400-P1.PCB	DATE: MAY-30-2012
POWER PLANE (LAYER 6)	



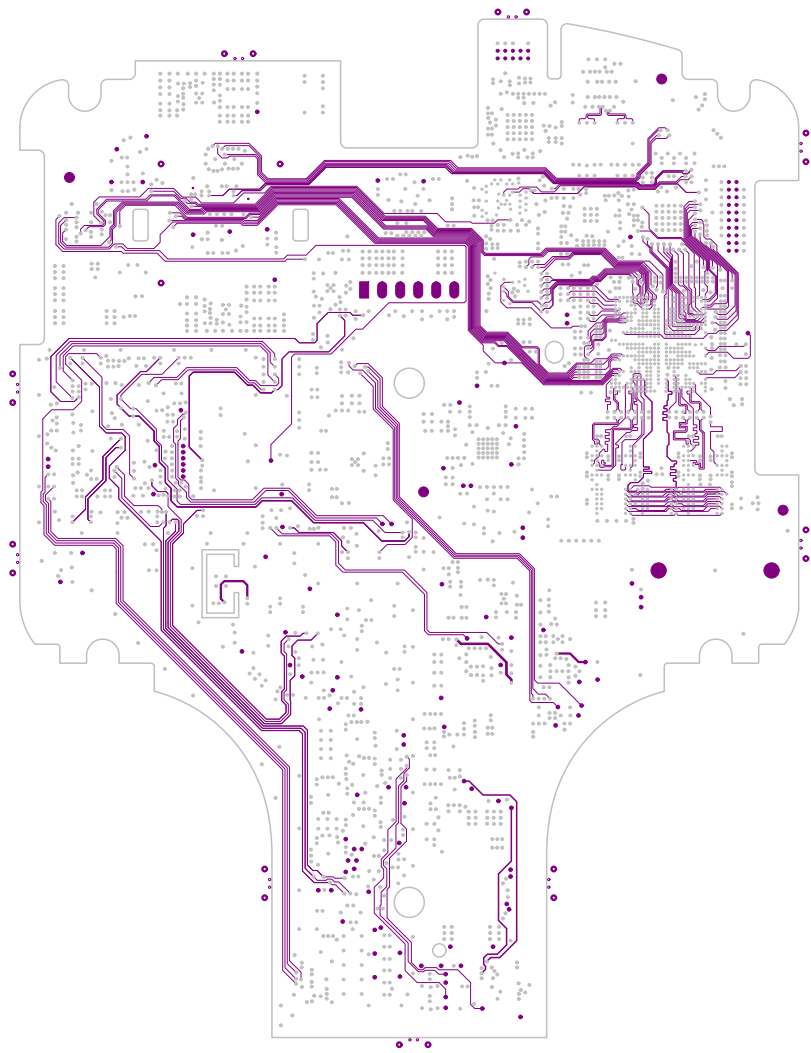
DESIGN BY TRI-TEC DESIGN, INC. (973) 256-5030	TITLE: DRAGONFLY MAIN PCB
DESIGNER: SJA/TTD PHONE: (973) 256-5030	PART NO: 027400 REV: P1
FILE: 027400-P1.PCB	DATE: MAY-30-2012
GROUND PLANE (LAYER 7)	



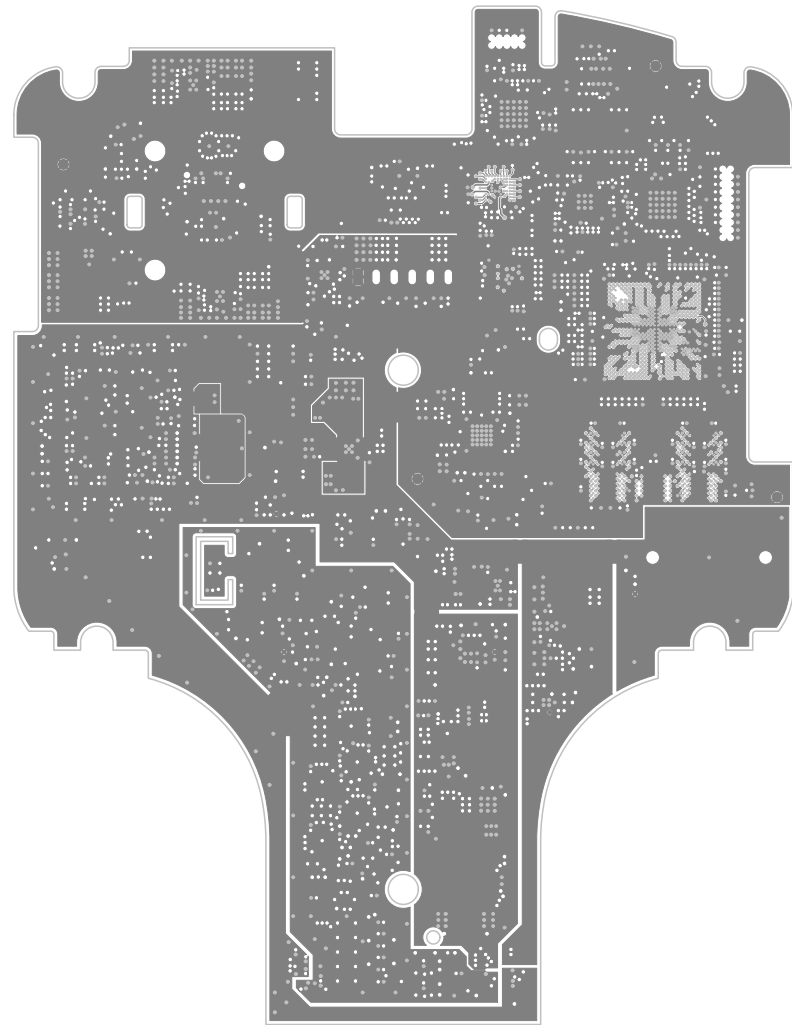
DESIGN BY TRI-TEC DESIGN, INC. (973) 256-5030	TITLE: DRAGONFLY MAIN PCB	
DESIGNER: SJA/TTD PHONE: (973) 256-5030	PART NO: 027400	REV: P1
	FILE: 027400-P1.PCB	DATE: MAY-30-2012
SIGNAL (LAYER 8)		



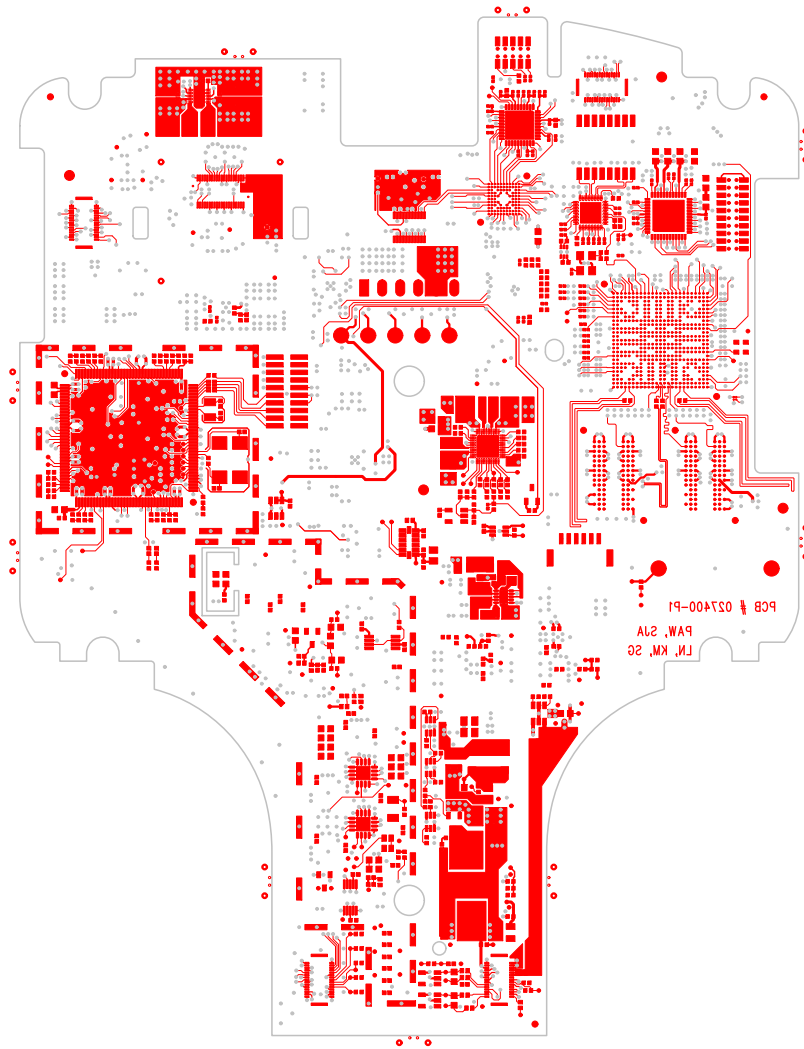
DESIGN BY TRI-TEC DESIGN, INC. (973) 256-5030	TITLE: DRAGONFLY MAIN PCB
DESIGNER: SJA/TTD PHONE: (973) 256-5030	PART NO: 027400 REV: P1
FILE: 027400-P1.PCB	DATE: MAY-30-2012
POWER PLANE (LAYER 9)	



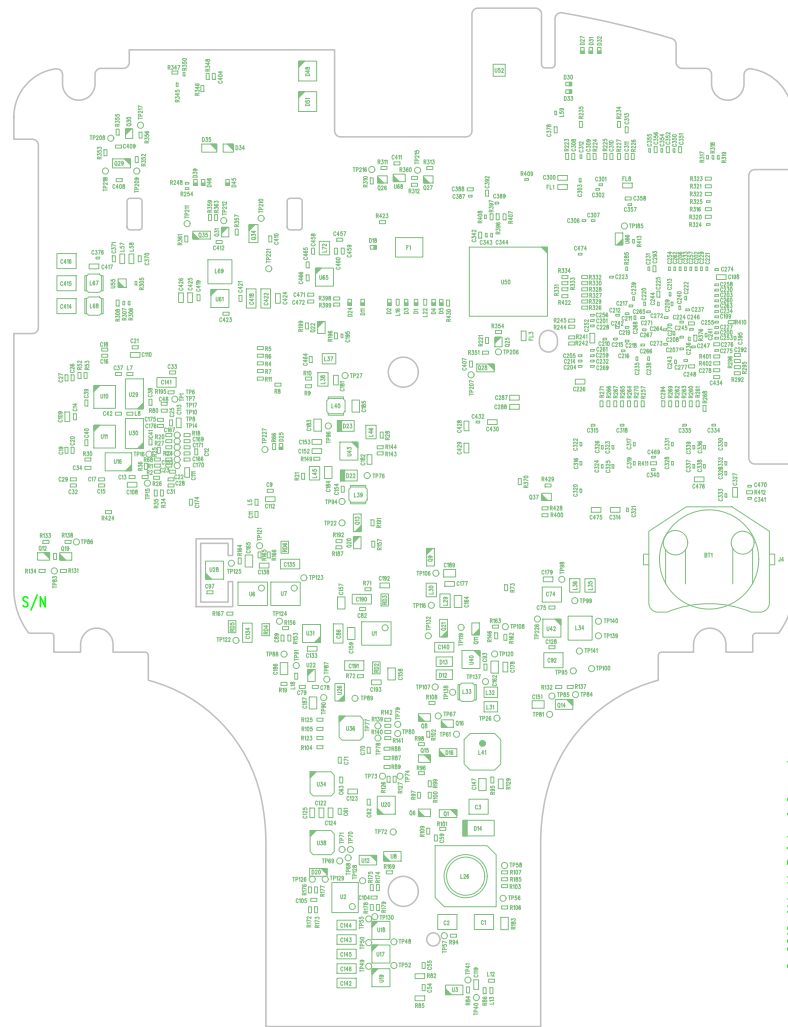
DESIGN BY TRI-TEC DESIGN, INC. (973) 256-5030	TITLE: DRAGONFLY MAIN PCB		
DESIGNER: SJA/TTD PHONE: (973) 256-5030	PART NO: 027400	REV: P1	
	FILE: 027400-P1.PCB	DATE: MAY-30-2012	
SIGNAL (LAYER 10)			



DESIGN BY TRI-TEC DESIGN, INC. (973) 256-5030	TITLE: DRAGONFLY MAIN PCB
DESIGNER: SJA/TTD PHONE: (973) 256-5030	PART NO: 027400 REV: P1
FILE: 027400-P1.PCB	DATE: MAY-30-2012
GROUND PLANE (LAYER 11)	



DESIGN BY TRI-TEC DESIGN, INC. (973) 256-5030		TITLE: DRAGONFLY MAIN PCB	
DESIGNER: SJA/TTD PHONE: (973) 256-5030	PART NO: 027400	REV: P1	
	FILE: 027400-P1.PCB	DATE: MAY-30-2012	
LAYER 12 (BOTTOM SIDE)			

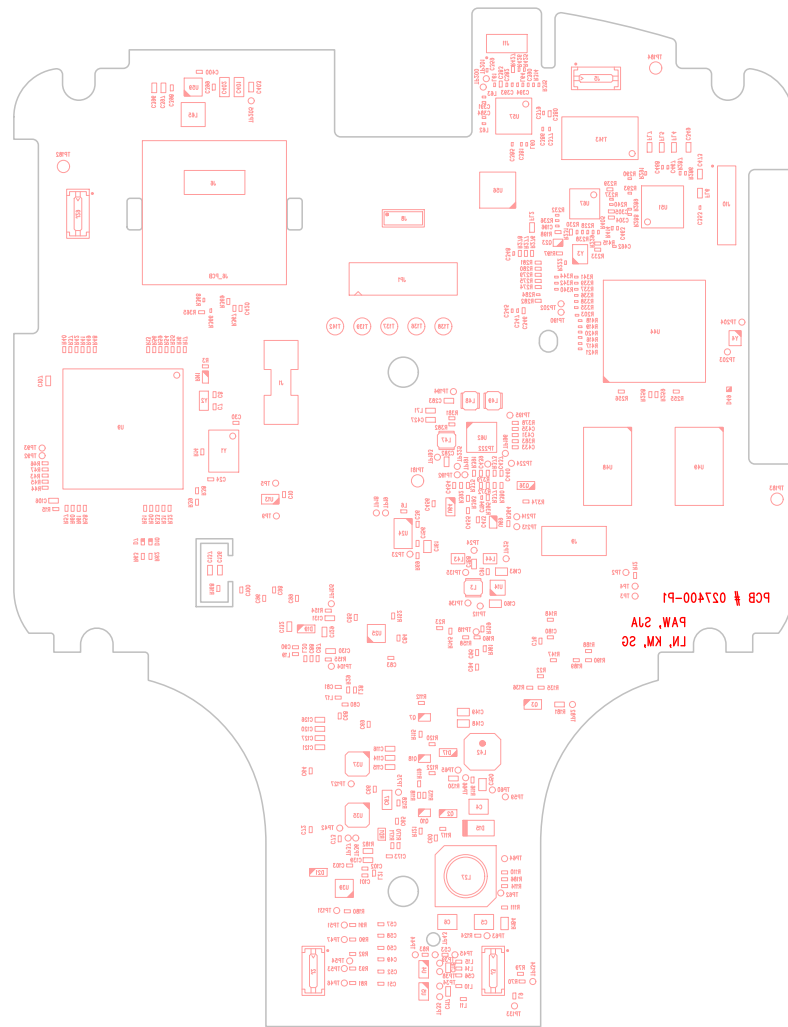


C. 2012 Abbott Point of Care, Inc.
PCB # 027400-P1



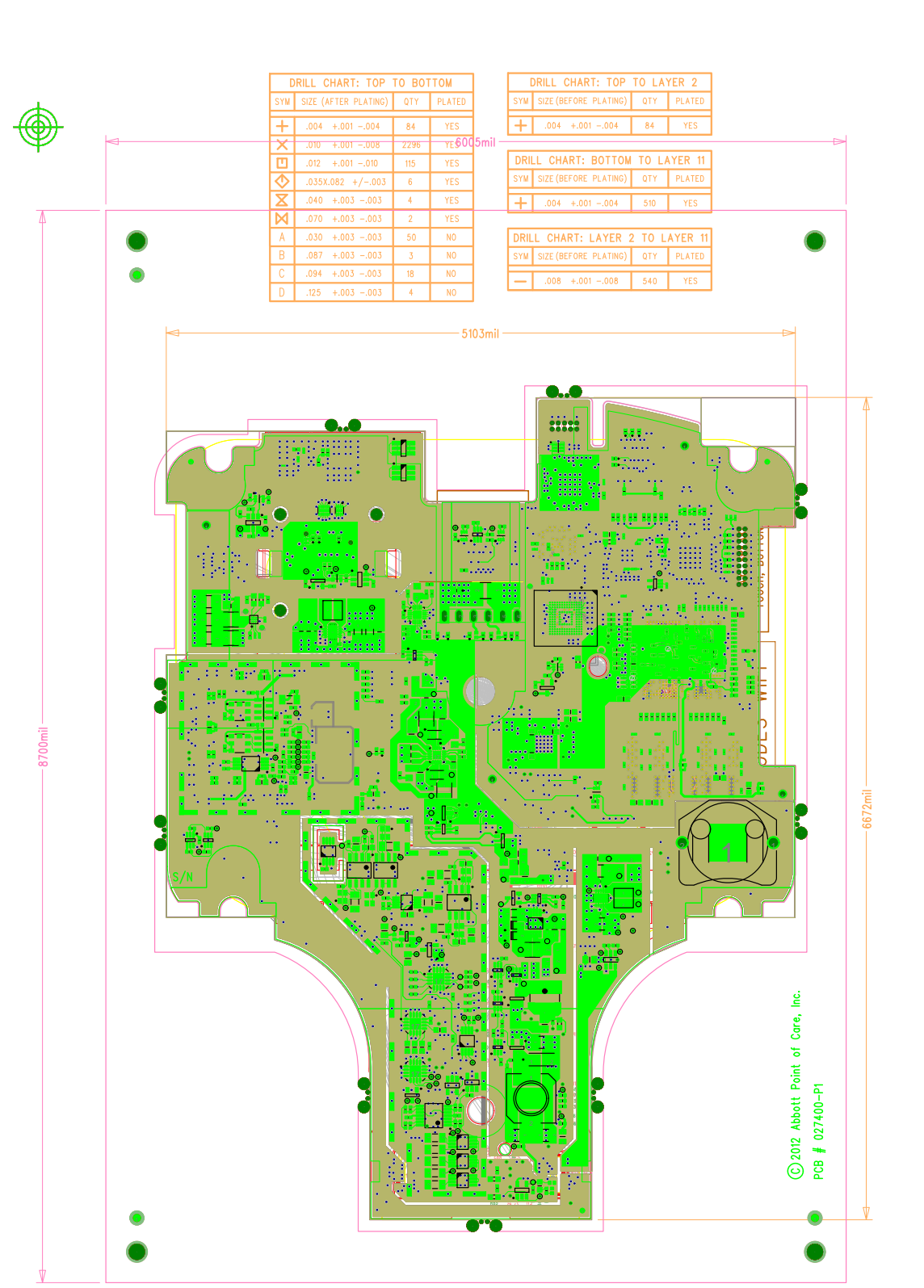
DESIGN BY TRI-TEC DESIGN, INC. (973) 256-5030	TITLE: DRAGONFLY MAIN PCB	
DESIGNER: SJA/TTD PHONE: (973) 256-5030	PART NO: 027400	REV: P1
	FILE: 027400-P1.PCB	DATE: MAY-30-2012
LAYER: (KOB:SIDE)		





DESIGN BY TRI-TEC DESIGN, INC. (973) 256-5030	TITLE: DRAGONFLY MAIN PCB	
DESIGNER: SJA/TTD PHONE: (973) 256-5030	PART NO: 027400	REV: P1
	FILE: 027400-P1.PCB	DATE: MAY-30-2012
LAYER 12 (BOTTOM SIDE)		
BOTTOM SIDE ASSEMBLY		





DRILL CHART: TOP TO BOTTOM				
SYM	SIZE (AFTER PLATING)	QTY	PLATED	
+	.004 +.001 -.004	84	YES	
X	.010 +.001 -.008	2296	YES	5005mil
□	.012 +.001 -.010	115	YES	
◇	.035X.082 +/--.003	6	YES	
⊗	.040 +.003 -.003	4	YES	
⊗	.070 +.003 -.003	2	YES	
A	.030 +.003 -.003	50	NO	
B	.087 +.003 -.003	3	NO	
C	.094 +.003 -.003	18	NO	
D	.125 +.003 -.003	4	NO	

DRILL CHART: TOP TO LAYER 2				
SYM	SIZE (BEFORE PLATING)	QTY	PLATED	
+	.004 +.001 -.004	84	YES	

DRILL CHART: BOTTOM TO LAYER 11				
SYM	SIZE (BEFORE PLATING)	QTY	PLATED	
+	.004 +.001 -.004	510	YES	

DRILL CHART: LAYER 2 TO LAYER 11				
SYM	SIZE (BEFORE PLATING)	QTY	PLATED	
—	.008 +.001 -.008	540	YES	

		Thickness Nom	Material Type
		mils (um)	
LAYER 1 (TOP)	1oz. FINISHED	1.70 (43)	FOIL - .25 OZ
		2.78 (71)	1080 - Polyclad 370 HR
LAYER 2	1oz. FINISHED	1.70 (43)	FOIL - .25 OZ
		2.75 (70)	1080 - Polyclad 370 HR
LAYER 3	.5oz	0.60 (15)	
LAYER 4	.5oz	3.50 (89)	LAM, 370HR .0035 3313 .5/.5 DSTF 24x18
		0.60 (15)	
		3.40 (86)	3313 - Polyclad 370 HR
LAYER 5	.5oz	0.60 (15)	
LAYER 6	.5oz	3.50 (89)	LAM, 370HR .0035 3313 .5/.5 DSTF 24x18
		0.60 (15)	
		17.40 (442)	2116 / 7628 / 2116 - Polyclad 370 HR
LAYER 7	.5oz	0.60 (15)	
LAYER 8	.5oz	3.50 (89)	LAM, 370HR .0035 3313 .5/.5 DSTF 24x18
		0.60 (15)	
		3.40 (86)	3313 - Polyclad 370 HR
LAYER 9	.5oz	0.60 (15)	
LAYER 10	.5oz	3.50 (89)	LAM, 370HR .0035 3313 .5/.5 DSTF 24x18
		0.60 (15)	
		2.75 (70)	1080 - Polyclad 370 HR
LAYER 11	1oz. FINISHED	1.70 (43)	FOIL - .25 OZ
		2.78 (71)	1080 - Polyclad 370 HR
LAYER 12 (BOTTOM)	1oz. FINISHED	1.70 (43)	FOIL - .25 OZ

Overall Board Thicknesses (Over Conductor)
 inches (mm)
 nom: 0.0609(1.55)

MATERIAL SPECIFICATIONS/NOTES

- Top side of PC board shown (use artwork 027400-P1.PCB)
- Board material to be 370HR or equivalent.
- Via holes (4.00, 8.00 and 10.0 mil drill) shall be plugged and plated over. No other hole size shall be plugged.
- Apply liquid photo imageable solder mask (colour green) per IPC-SM-840, class H, to both sides of the board.
- Note the copper weight for layers 1,2,11 and 12 shall be plated up to 1oz. finished copper weight.
- All edges to be routed in panel array.
- Fabricate PCB in accordance with IPC-6012, Class 2.
- Board finish to be Immersion Gold over Electrolysis Nickel over copper (NiAu).
- Test requirements: 100% net-list electrical verification using customer supplied netlist.
- PCB to be fabricated using RoHS compliant materials and processes.
- Do not put any labels on PCB.
- MFG must etch logo, date code, and UL94V-0 on bottom side.
- The drill size for the plated thru holes represents the post- plating (finished) dimension (mil)

- Via Notes:**
- Micro Via 1-2 and 12-11: 4 mil via, 10 mil pad
 - Buried Via 2-11: 8 mil via, 15 mil pad
 - Through holes 1-12: 10 mil via, 20 mil pad
- Impedance Notes:**
- Layer 3, 5, 8 and 10: 3.00 mil lines for 50 ohms +/-10%
 - Layer 3, 5, 8 and 10: 3.00 mil lines/6.4 mil pitch for 90 ohm differential +/-10%

DESIGN BY TRI-TEC DESIGN, INC. (973) 256-5030	TITLE: DRAGONFLY MAIN PCB
DESIGNER: SJA/TTD PHONE: (973) 256-5030	PART NO: 027400 REV: P1
FILE: 027400-P1.PCB	DATE: MAY-30-2012
DRAWN BY: (TOP SIDE) (JEW)	
BOTTOM SIDE ASSEMBLY	

© 2012 Abbott Point of Care, Inc.
 PCB # 027400-P1